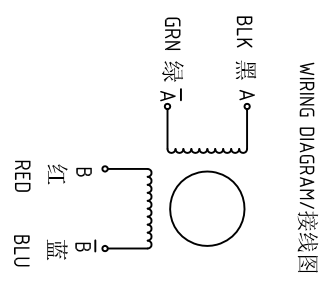
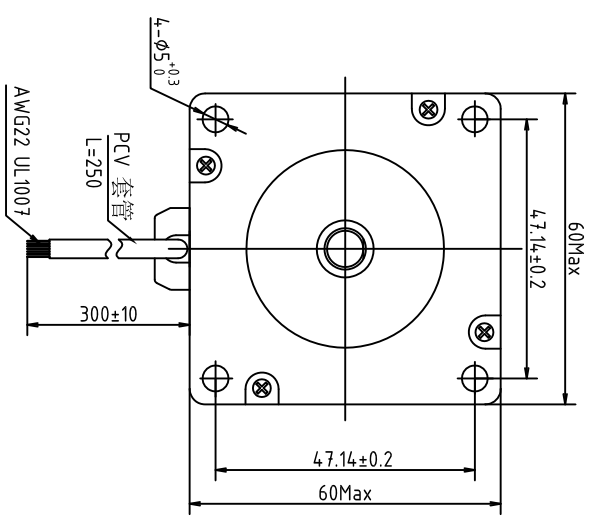
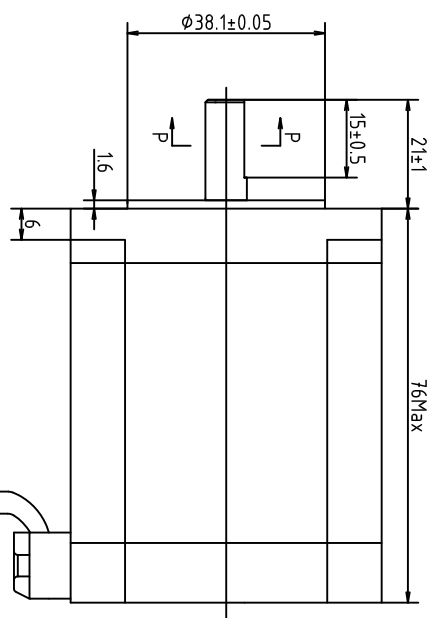
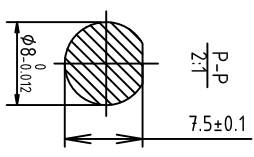


01.01.24.00362



励磁顺序(2相励磁) VS. 旋转方向  
EXCITING SEQUENCE (TWO PHASES) VS. Direction of Rotation

STEP	A	B	$\bar{A}$	$\bar{B}$
1	+	+	-	-
2	-	+	+	-
3	-	-	+	+
4	+	-	-	+

从安装面看为顺时针方向  
Clockwise vise from mounting side

电气特性参数/ELECTRICAL PARAMETER

步距角/STEP ANGLE	18°	±5%
相数/NO. OF PHASES	2	
额定电压/RATED VOLTAGE	3.0	V
额定电流/RATED CURRENT	3.0	A
电阻/RESISTANCE	1.0	ohm±10% AT 25°C
电感/INDUCTANCE	3.5	mH±20% AT 1KHz, 1Vrms
保持力矩/HOLDING TORQUE	2.1	N.m Typ.(TWO PHASE ON/RATED CURRENT)
绝缘耐压/DIELECTRIC STRENGTH	500V	A.C 1分钟/MINUTE
绝缘电阻/INSULATION RESISTANCE	100 M	Ω以上/MIN.
温度上升/TEMPERATURE RISE	80K	MAX.
转子惯量/ROTOR INERTIA	550	g.cm <sup>2</sup>
重量/WEIGHT	1.15	Kg
电机环境温度/MOTOR AMBIENT TEMP.	-20°C	---+50°C
环境温度/AMBIENT HUM.	15%	---90%

备注/NOTE:

- 额定电流, 两相通电/AT RATED CURRENT, TWO PHASE ON.
- 热阻法: 电机安装在180\*180\*15的铝板上, 电机线圈两端通额定电压, OPPS /MEASURED BY RESISTANCE METHOD. MOUNT WITH ALUMINIUM HEAT SINK 168\*168\*15 AT TWO WINDING BE EXCITED BY RATED VOLTAGE,OPPS,2PHASE ON.
- 寿命测试条件: 整步, 运动速度为最大启动频率, 轴承的表面温度不超过70°C LIFE TEST CONDITION:2PHASE EXCITING,FULL STEP, AT MAX. STARTING PULSE, BEARING TEMPERAURE SHOULD BE 70°C MAX.

1 2 3 4 5 6 7 8

CONFIRMED&ACCEPTED BY CUTOMER (客户确认&接受)		型号/MODEL	
COMPANY CHOP&SIGNATURE 盖章&签名)		24HS8430-8B15-N	
一般公差 TOLERANCE	±0.3/±3°	版本REV	日期
设计/DESIGNED	hong 18.04.19	比例 SCALE	1:1
审核/CHECKED		单位 UNIT	mm
批准/APPROVE		SYS MOTOR	
设计/DESIGNED		设计BY	备注/NOTE
Hybird Stepping Motor		第一角画法 FIRST ANGLE METHOD	
SHEET 页		1 / 1	