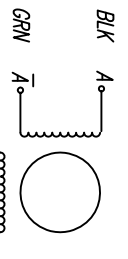
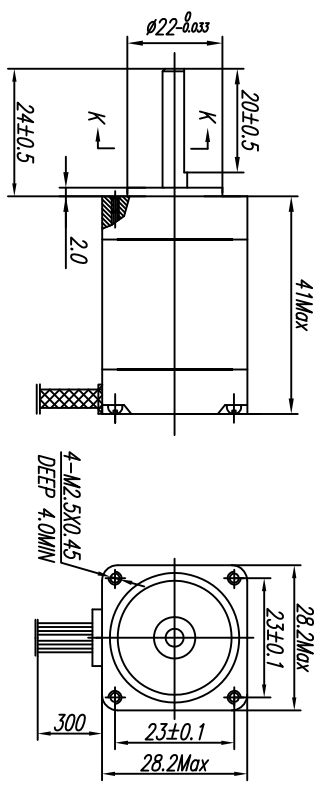


# HYBRID STEPPING MOTOR MOD. 11HY4401-24B

☐ COLORS OF LEAD WIRES

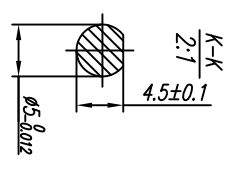


☐ DIMENSIONS unit=mm



☐ SPECIFICATIONS

PHASE	相数	2	PHASE	COMMENT
STEP ANGLE	步距角	1.8±5%	*/STEP	
VOLTAGE	静电压	4.2	V	
CURRENT	电流	0.6	A/PHASE	
RESISTANCE	电阻	7.0 ±10%	Ω/PHASE	
INDUCTANCE	电感	6.0 ±20%	mH/PHASE	
HOLDING TORQUE	静转矩	8.0	N.cm Min	
DETENT TORQUE	定位转矩	0.4	N.cm Max	
INSULATION CLASS	绝缘等级	B		
LEAD STYLE	引出线规格	AWG26 UL1007		



设计	20100120	审核		技术规格书		SYS MOTOR	
工艺		批准					
				版本 NR	共	张	