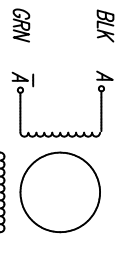
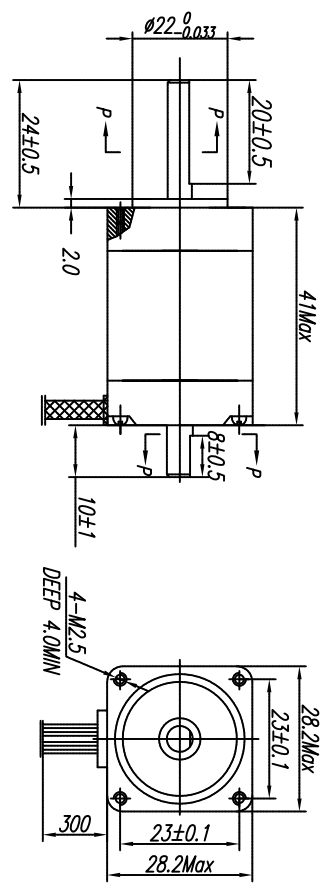


HYBRID STEPPING MOTOR MOD. 11HY4401-24BL10B

□ COLORS OF LEAD WIRES

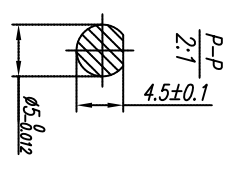


□ DIMENSIONS unit=mm



□ SPECIFICATIONS

PHASE	相数	2	PHASE	COMMENT
STEP ANGLE	步距角	1.8±5%	°/STEP	
VOLTAGE	静电压	4.2	V	
CURRENT	电流	0.6	A/PHASE	
RESISTANCE	电阻	7.0 ±10%	Ω/PHASE	
INDUCTANCE	电感	6.0 ±20%	mH/PHASE	
HOLDING TORQUE	静转矩	8.0	Ncm Min	
DETENT TORQUE	定位转矩	0.4	Ncm Max	
INSULATION CLASS	绝缘等级	B		
LEAD STYLE	引出线规格	AWG26 UL1007		



设计	审核	技术规格书		SYS MOTOR	
工艺	批准	版本 NR	共	张	

1 2 3 4